

[www.aspanet.org/annualconference](http://www.aspanet.org/annualconference)  
#ASPA2024



**2024 ASPA**  
**ANNUAL CONFERENCE**  
MINNEAPOLIS, MINNESOTA  
April 12-16, 2024



ASPA

# Ohio State's John Glenn College of Public Affairs Welcomes Seven Faculty Members:

---

**Greg Wilson**, Assistant Professor — Fellow to Faculty

**Brian Mittendorf**, Courtesy Professor

**Lauren Jones**, Associate Professor

**Alex Hollingsworth**, Associate Professor

**Esra Gules-Guctas**, Assistant Professor

**Victor St. John**, Assistant Professor

**Ange-Marie Hancock**, Courtesy Professor  
(Not pictured)

Learn more about these experts:

[glenn.osu.edu/new-faculty](http://glenn.osu.edu/new-faculty)



THE OHIO STATE  
UNIVERSITY

JOHN GLENN COLLEGE  
OF PUBLIC AFFAIRS

# Table of Contents

Welcome .....	4
ASPA's Leadership .....	6
ASPA's Mobile App .....	9
Conference Sponsors.....	10
Founders' Fellows Supporters .....	12
Floor Plans.....	14
General Information .....	16
Conference Tracks .....	18
Conference at a Glance.....	21
Welcome Reception and Networking Receptions.....	30
Founders' Fellows Class of 2024.....	33
Plenaries .....	34
Presidential Panels .....	44
Special Events .....	65
Student and New Professional Summit .....	73



2024 **ASPA**  
**ANNUAL CONFERENCE**  
MINNEAPOLIS, MINNESOTA  
April 12-16, 2024

Dear Friends and Colleagues,

Two years have passed since we last gathered in person to exchange knowledge and research, celebrate individuals and organizations that serve the public good, welcome new public service professionals to our community and have some fun with colleagues and friends. We are delighted that you are here as we continue our collective efforts to *advance excellence in public service*. **Welcome back!**

This year's conference theme, *Building Resilient Communities*, gives us the space to consider the necessary components of resilience to help all communities be flexible and nimble in the years ahead. Our Call for Proposals asked our community to consider “Gumby” qualities as you thought through what sessions could discuss. We hope this conference provides attendees with the expertise to build “Gumby” communities that can be stretched, shrunk or squished by the forces around them, while also retaining the structural integrity needed to bounce back, remain whole and thrive.

Make sure you take breaks from the sessions to enjoy the many social activities on the agenda this year, most of which are open to all attendees here at the hotel. The Welcome Reception will take place on Saturday evening; the President's Reception will take place Sunday evening; and a special event launching ASPA's newest Section; The Section on Hispanic, Latin American, Caribbean and Iberian Public Administration—will take place Monday evening. Check the schedule in this guide or the app for full details.

Of course, this conference could not happen without the individuals and organizations that are supporting events throughout our time together. To those who have sponsored this event, purchased advertising or are hosting events, thank you for everything you do and, especially, for your investment in ASPA, which makes this conference possible.

Thank you for attending our Society's 2024 Annual Conference. We are grateful to each of you for actively and meaningfully engaging in our important work. We salute your dedication and commitment to public service, in the United States and around the world.



Patria de Lancer Julnes  
*President*



Bill Shields  
*Executive Director and CEO*



# ASPA's **Leadership Welcomes You** to the 2024 Annual Conference

## Officers



**President**  
Patria de  
Lancer Julnes



**Executive  
Director and  
Chief  
Executive  
Officer**  
Bill Shields



**President-  
Elect**  
John Bartle



**Conference  
Honorary  
Chair**  
Louise  
Comfort

## **Conference Track Reviewers**

Lauren Azevedo  
Fran Berry  
Nicki Fraser  
N. Emel Ganapati  
Michael Massiah  
Rosemary O'Leary  
Edgar Ramirez de La Cruz  
William Resh  
Alan Shark



**Conference  
Co-Chairs**  
Naim Kapucu



Hillary  
Knepper

# National Council

## District I

Michael Ahn  
Maria D'Agostino  
Malcolm Oliver

## District II

Marlon Brown  
Diane Disney  
Thomas Stanton

## District III

Terry Murphy  
Ronald Sanders  
Miriam Singer

## District IV

Thomas Becker  
Merlene-Patrice Bourdeau-Quispe  
Ana-Maria Dimand

## District V

Galia Cohen  
Juliet Lee  
Aziza Zemrani

## International Director

Pan Suk Kim

## Student Representative

Jennifer Martinez-Medina

## COMPA Representative

George Amedee

## ***In Memoriam***

**Celebrating the life of a  
leader, colleague, friend and mentor**



**Allan Rosenbaum**  
*President, 2014-2015; 2021-2023*





## Mobile App

ASPA's 2024 app is the best place to find the most up-to-date information about the conference, including attendee lists, concurrent sessions and conference alerts. The app is available for iPhone, iPad and Android devices and as a web platform.

- 1 Search and download ASPA in the App Store in iOS or Android devices. (Scan the QR code for easy access.)
- 2 Have your ASPA login information handy to log into the app or visit our membership desk to retrieve them. A one-time passcode is also available.
- 3 Edit your profile with the appropriate information for all of your colleagues to see about you, including a headshot!

Sponsored by  SCHOOL OF PUBLIC ADMINISTRATION



# Conference Sponsors

## GOLD SPONSOR

Florida International University, Steven J. Green

School of International and Public Affairs

*Sponsored:* Registration Bags



## ASPA APP SPONSOR

University of New Mexico, School of  
Public Administration



## SILVER SPONSORS

Metro State University, College of Community  
Studies and Public Affairs/Public and  
Nonprofit Leadership

*Sponsored:* Water Bottles



Routledge, Taylor & Francis

*Sponsored:* Nesta M. Gallas Lecture



Texas A&M University, The Bush School of  
Government and Public Service

*Sponsored:* Public Service Plenary



University of Georgia, School of Public  
and International Affairs

*Sponsored:* Hotel Key Cards



University of Pittsburgh, Graduate School  
of Public and International Affairs

*Sponsored:* Social Media



## BRONZE SPONSORS

College of Charleston, The Riley Center  
for Livable Communities

*Sponsored:* Emergency Preparedness,  
Public Health and Disaster Response Track



## Tarleton State University

*Sponsored: Hand Sanitizer*



## University of Arkansas, Clinton School of Public Service

*Sponsored: Name Badges*



## University of Central Florida

*Sponsored: Founders' Fellows Reception*



## University of Delaware, Biden School of Public Policy and Administration

*Sponsored: Signs*



## University of Minnesota, Hubert H Humphrey School of Public Affairs

*Sponsored: Coffee Break*



## University of Nebraska at Omaha, College of Public Affairs and Community Service

*Sponsored: Good Governance and Democratic Resilience Track*



## University of Southern California, Sol Price School of Public Policy

*Sponsored: Lanyards*



## L. Douglas Wilder School of Government and Public Affairs

*Sponsored: Badge Holders*



## COPPER SPONSORS

### Pace University

*Sponsored: Presidential Panel*



### University of Colorado Denver, School of Public Affairs

*Sponsored: Awards Brochure*



### Portland State University, Public Administration Program

*Sponsored: Awards Brochure*



# Founders' Fellows **Supporters**

## BENEFACTOR AND INAUGURAL UNDERWRITING SPONSORS

---



Trachtenberg School  
of Public Policy  
& Public Administration  
THE GEORGE WASHINGTON UNIVERSITY



WILEY

## MERIT

---

Mary Ellen Guy

Roger Hartley

Chester A. Newland

Meredith Newman

*Public Administration Quarterly*

Thomas Stanton

Southeastern Conference on Public Administration

## BOOK

---

John Bartle

Beverly Cigler

Conference of Minority Public Administrators

Pan Suk Kim

Ahmed Rafi

Section on Complexity and Network Studies

Section on Emergency and Crisis Management

Section on Nonprofits

Section on Professional and Organizational Development

Section on Public Administration Education

Bill Shields

Student and New Professional Section

Blue Wooldridge

## DONOR

---

J. Paul Blake

Christopher Burks

Ana-Maria Dimand

Rachel Emas

Lindsey Evans

Kim Hoffman

William Jackson

Vaiva Kalesnikaite

New England Chapter

New Jersey Chapter

Sean McCandless

Malcolm Oliver

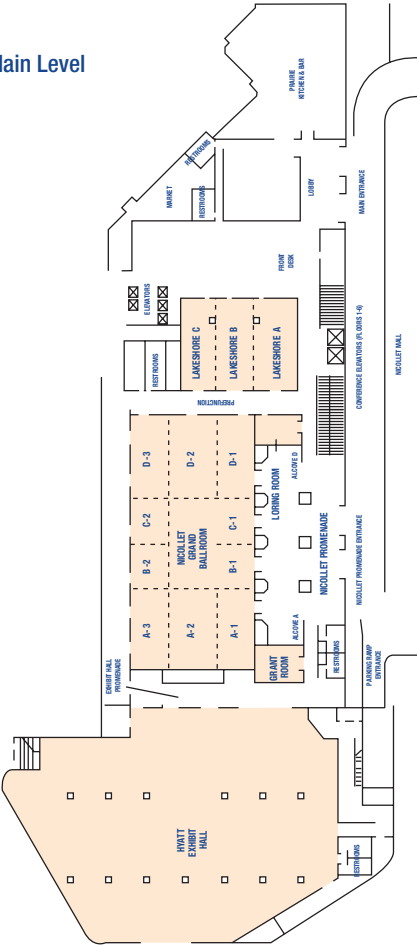
Evelyn Rodriguez-Plesa

Stephen Rolandi

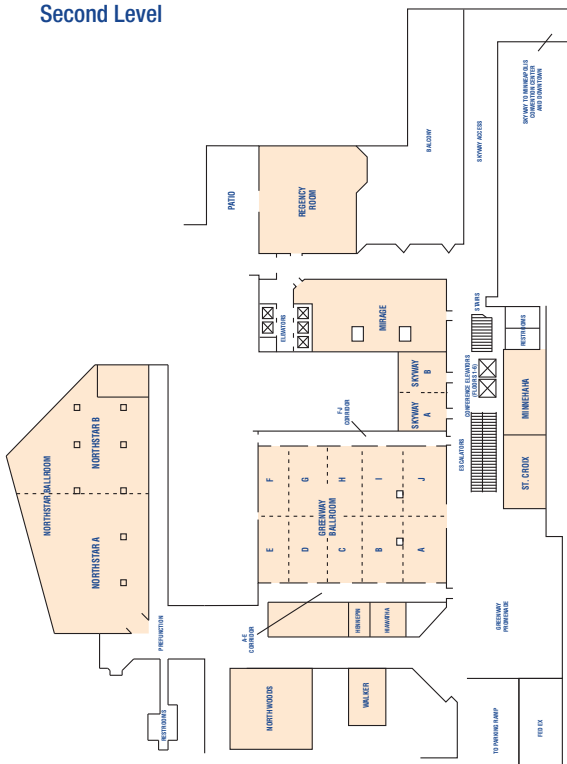
Kendra Stewart

# Floor Plans

## Main Level



## Second Level



# General Information

## Conference Registration

ASPA's registration desk is in Nicollet Promenade. Registration badges and other conference materials can be picked up there. The registration desk will be open at the following times:

Thursday, April 11	2:00 p.m. – 6:00 p.m.
Friday, April 12	7:00 a.m. – 6:00 p.m.
Saturday, April 13	7:00 a.m. – 6:00 p.m.
Sunday, April 14	7:00 a.m. – 6:00 p.m.
Monday, April 15	7:00 a.m. – 6:00 p.m.
Tuesday, April 16	7:00 a.m. – 10:00 a.m.

A lactation room is available for those in need throughout the conference during these hours. It is locked to guarantee privacy; visit our registration desk for access.

## Badges

All conference registrants receive a badge when they check in at ASPA's registration area. **This badge must be worn at all times and will be checked throughout the conference.** If you misplace your badge, please come to the ASPA registration desk in Nicollet Promenade for a replacement.

## The ASPA App!

Thanks to the generous support of the University of New Mexico, School of Public Affairs, ASPA is pleased to provide an app for this year's conference, replacing the program book you have seen in the past. You may find the app in your device's app store, available for download. Use the QR code in this book on page 9 for access. You will need your ASPA login information to view conference details. If you do not remember those details, the app will provide you with a one-time code to help you gain access or you can come to our membership table for help. The app is viewable on your phone and tablet, or via the web on your computer if that is easier for you.

## Security Reminder, Cell Phones and Other Electronic Devices

Please be courteous to presenters and fellow attendees by silencing your cell phone or other electronic devices while



attending educational sessions and meetings. Attendees are reminded not to leave items of value, including laptops, purses and tablets, unattended at any time. **Neither the hotel nor ASPA is responsible for lost or stolen items.**

### **Continuing Education**

Attendees seeking continuing education can contact ASPA at [aspaconference@aspanet.org](mailto:aspaconference@aspanet.org) for assistance. ASPA does not notify organizations on behalf of attendees, nor keep session attendance records. ASPA cannot guarantee acceptance for continuing education by individual licensing boards.

### **Speaker Cancellations/Substitutions**

ASPA makes every effort to offer programs of the highest caliber. In the event of speaker cancellations, ASPA reserves the right to modify session material or substitute speakers without advance notice.

### **Special Assistance**

ASPA is committed to making its entire conference accessible to all individuals, including those with disabilities. For further information regarding special needs, or if you have previously requested assistance, please visit the ASPA registration desk.

### **Connect with Us!**

Make the most of our Twitter channel throughout the conference. Share your experience and hear the buzz from others!



X (formerly Twitter): **@ASPANational** – and tweet about the conference using **#ASPA2024**

Annual Conference Website: **[www.aspanet.org/annualconference](http://www.aspanet.org/annualconference)**

You also can connect with your fellow attendees via ASPA's app by clicking on the "Connect" button on the conference's dashboard. (Friends must be logged into the app for connections to work.)

# 2024 Conference Tracks

## ■ TRACK ONE: Good Governance and Democratic Resilience

History contains many examples of democratic systems being tested by opposing forces. If effective public administration is necessary for democratic resilience, what does it mean when democracies are under attack from all sides? This track will explore what good governance looks like.

Track Sponsored By  UNIVERSITY OF NEBRASKA AT OMAHA  
COLLEGE OF PUBLIC AFFAIRS  
AND COMMUNITY SERVICE

## ■ TRACK TWO: Social Equity, Diversity and Inclusion

Social equity, diversity and inclusion (SEDI) plays a powerful role in building community resilience. The impact that all voices working together can have makes communities more nimble, flexible and better able to bounce back when disasters strike. This track will explore SEDI in the public sector and identify research and practice contributing to changing the narrative around equity.

Track Sponsored By



THE H. GEORGE FREDERICKSON CENTER  
FOR SOCIAL EQUITY



## ■ TRACK THREE: Innovative Human Resource Management

Public sector employees are not immune to the workforce and workplace challenges that have developed or been exacerbated due to political, health and economic forces. This track will look at questions related to labor relationships, workforce management, professional development and more.

Track Sponsored By



METRO STATE  
UNIVERSITY

COLLEGE OF COMMUNITY  
STUDIES AND PUBLIC AFFAIRS

## ■ TRACK FOUR: Environmental Management and Effective Technology

Environmental management touches almost every public policy and administration challenge in some way, making it an important focal point for communities striving for resilience. How communities use technology will make or break their resiliency over time. This track will look at what environmental management means today.

*Track Sponsored By*



TEXAS A&M UNIVERSITY  
The Bush School  
of Government & Public Service

## ■ TRACK FIVE: Emergency Preparedness, Public Health and Disaster Response

One hallmark of a resilient community is its ability to recover quickly and successfully from disasters and crises. Emergency managers have an opportunity to use post-disaster environments to create and enhance resiliency. What new information can we bring to disaster management?

*Track Sponsored By*



COLLEGE of  
CHARLESTON  
THE BILLY CENTER FOR  
LIVABLE COMMUNITIES

## ■ TRACK SIX: Global and Comparative Perspectives

Both the pandemic and a rising tide of anti-democratic sentiment around the world have highlighted the disparities between and among countries. As public administrators, our role is to analyze success stories, fit applicable ones into our models and find effective ways to build resilience. This track will encourage exchanges of practices and recent research, and generate new ideas from global and comparative perspectives.

*Track Sponsored By*



Steven J. Green  
School of International  
& Public Affairs  
FLORIDA INTERNATIONAL UNIVERSITY



**GERALD G. FOX MASTER OF  
PUBLIC ADMINISTRATION**

Ranked in the top **18%** of public affairs programs in U.S. News & World Report rankings. Also ranked in specialty areas.

## *Editors*

Nonprofit and Voluntary Sector Quarterly, the journal of the Association for Research on Nonprofit Organizations and Voluntary Action (ARNOVA)



**Joanne G. Carman**



**Jaclyn S. Piatak**

UNC Charlotte's MPA program and its talented faculty offer exceptional leadership on societal issues through innovative research, teaching, and engagement in diverse areas including urban management and policy, nonprofit management, emergency management, public budgeting and finance, and arts administration.

VISIT [MPA.CHARLOTTE.EDU](http://MPA.CHARLOTTE.EDU)  
OR CALL 704-687-5974

UNIVERSITY OF NORTH CAROLINA  
**CHARLOTTE**  
COLLEGE OF HUMANITIES & EARTH AND SOCIAL SCIENCES

# Conference at a **Glance**

## Thursday, April 11

2:00 p.m. - 6:00 p.m. ASPA Registration Open  
*Nicollet Promenade*

2:00 p.m. - 6:00 p.m. ASPA Lactation Room Open  
*Obtain Access from ASPA Registration*

## Friday, April 12

7:00 a.m. - 6:00 p.m. ASPA Registration Open  
*Nicollet Promenade*

7:00 a.m. - 6:00 p.m. ASPA Lactation Room Open  
*Obtain Access from ASPA Registration*

8:00 a.m. - 9:15 a.m. Concurrent Sessions  
*Various Locations*

8:00 a.m. - 4:00 p.m. Student and New Professional Summit  
*Skyway A-B*

8:00 a.m. - 5:00 p.m. Fred Riggs Symposium  
*Lakeshore A-B*

8:00 a.m. - 5:00 p.m. Deil Wright Symposium  
*Lakeshore C*

8:00 a.m. - 5:00 p.m. Section on Public Administration  
Education Teaching Symposium  
*Greenway A*

8:30 a.m. - 5:00 p.m. Section on African Public  
Administration Symposium  
*St. Croix*

9:30 a.m. - 10:45 a.m. Concurrent Sessions  
*Various Locations*

11:00 a.m. - 12:15 p.m. Concurrent Sessions  
*Various Locations*

## Conference at a **Glance**

Noon - 3:00 p.m.	Public Administration Department Heads Forum <i>Northstar A</i>
12:30 p.m. - 1:45 p.m.	Book Talk Live! <i>Mirage</i>
12:30 p.m. - 1:45 p.m.	Concurrent Sessions <i>Various Locations</i>
2:00 p.m. - 3:15 p.m.	Concurrent Sessions <i>Various Locations</i>
2:00 p.m. - 6:00 p.m.	SPPM Marc Holzer Public Performance Symposium <i>Minnehaha</i>
3:30 p.m. - 4:45 p.m.	Presidential Panel <i>Mirage</i>
4:30 p.m. - 6:30 p.m.	Student Policy Debate <i>Skyway A-B</i>
5:00 p.m. - 6:00 p.m.	Chapter, Section and Journal Business Meetings <i>Various Locations</i>
5:00 p.m. - 7:00 p.m.	Section on African Public Administration Business Meeting and Reception <i>St. Croix</i>
5:00 p.m. - 7:00 p.m.	Section on Personnel and Labor Relations Business Meeting and Reception <i>Greenway J</i>

5:00 p.m. - 7:00 p.m. Section on International and Comparative Administration 50<sup>th</sup> Anniversary Reception  
*Lakeshore A*

6:30 p.m. - 7:45 p.m. Section on Transportation Policy Administration Reception  
*Greenway A*

6:30 p.m. - 7:45 p.m. Founders' Fellows Reception  
*Lakeshore B*

## **Saturday, April 13**

7:00 a.m. - 6:00 p.m. ASPA Registration Open  
*Nicollet Promenade*

7:00 a.m. - 6:00 p.m. ASPA Lactation Room Open  
*Obtain Access from ASPA Registration*

7:45 a.m. - 8:45 a.m. Chapter, Section and Journal Business Meetings  
*Various Locations*

9:00 a.m. - 10:30 a.m. Opening Plenary and Elliot Richardson Lecture  
*Nicollet Grand Ballroom*

10:30 a.m. - 6:15 p.m. Section on Public Performance Management Accountability Symposium  
*Skyway B*

11:00 a.m. - 12:15 p.m. Presidential Panel  
*Mirage*

11:00 a.m. - 12:15 p.m. Concurrent Sessions  
*Various Locations*

11:00 a.m. - 2:00 p.m. Conflict Resolution Workshop  
*Greenway J*

## Conference at a Glance

Noon - 2:00 p.m.	Section on Ethics and Integrity of Governance Anniversary Lunch <i>Northstar A</i>
12:30 p.m. - 1:45 p.m.	Concurrent Sessions <i>Various Locations</i>
1:00 p.m. - 5:00 p.m.	Workshop: Unmasking the Secrets of the Academy <i>Lakeshore B</i>
2:00 p.m. - 3:15 p.m.	Presidential Panel <i>Mirage</i>
2:00 p.m. - 5:00 p.m.	Section on Personnel and Labor Relations Symposium: Future of Work: AI, Remote Work and Social Equity <i>Skyway A</i>
2:00 p.m. - 6:15 p.m.	Section on Public Management Practice Good Governance Worldwide Symposium <i>Lakeshore C</i>
3:30 p.m. - 4:45 p.m.	Concurrent Sessions <i>Various Locations</i>
5:00 p.m. - 6:15 p.m.	Presidential Panel <i>Mirage</i>
5:00 p.m. - 6:15 p.m.	ASPA Past Presidents' Roundtable <i>Lakeshore A</i>
5:00 p.m. - 6:15 p.m.	Concurrent Sessions <i>Various Locations</i>
6:30 p.m. - 8:30 p.m.	Welcome Reception <i>Northstar Lobby and Northstar A</i>



## Sunday, April 14

7:00 a.m. - 6:00 p.m. ASPA Registration Open  
*Nicollet Promenade*

7:00 a.m. - 6:00 p.m. ASPA Lactation Room Open  
*Obtain Access from ASPA Registration*

7:00 a.m. - 8:00 a.m. Chapter, Section and Journal  
Business Meetings  
*Various Locations*

8:00 a.m. - 9:30 a.m. Donald C. Stone Lecture  
*Nicollet Grand Ballroom*

9:45 a.m. - 11:00 a.m. Presidential Panel  
*Mirage*

9:45 a.m. - 11:00 a.m. National Council Information Session  
*Northstar A*

9:45 a.m. - 11:00 a.m. Concurrent Sessions  
*Various Locations*

11:15 a.m. - 12:45 p.m. Gloria Hobson Nordin Social Equity  
Luncheon  
*Regency*

12:45 p.m. - 2:15 p.m. Public Service Plenary  
*Nicollet Grand Ballroom*

2:15 p.m. - 3:30 p.m. Concurrent Sessions  
*Various Locations*

3:00 p.m. - 4:30 p.m. National Council Meeting  
*Northstar A*

3:45 p.m. - 5:00 p.m. Concurrent Sessions  
*Various Locations*

## Conference at a **Glance**

5:00 p.m. - 6:30 p.m. International Assembly  
*Nicollet Grand Ballroom*

6:00 p.m. - 7:00 p.m. Pets and Preparedness  
*Northstar A*

6:30 p.m. - 8:15 p.m. Career Fair  
*Skyway A-B*

6:30 p.m. - 8:15 p.m. Florida State University Askew School  
Reception in Honor of Fran Berry's  
Retirement  
*Regency*

6:30 p.m. - 8:15 p.m. International Reception  
*Greenway J*

6:30 p.m. - 8:15 p.m. Section for Women in Public  
Administration (SWPA) Ice Cream  
Social  
*Greenway A*

6:30 p.m. - 8:15 p.m. Career Fair  
*Skyway A-B*

8:30 p.m. - 10:00 p.m. President's Reception  
*Northwoods*

## Monday, April 15

7:00 a.m. - 6:00 p.m. ASPA Registration Open  
*Nicollet Promenade*

7:00 a.m. - 6:00 p.m. ASPA Lactation Room Open  
*Obtain Access from ASPA Registration*

8:00 a.m. - 9:15 a.m. Presidential Panel  
*Mirage*

- 8:00 a.m. - 9:15 a.m. Concurrent Sessions  
*Various Locations*
- 8:00 a.m. - 9:30 a.m. Section for Women in Public Administration (SWPA) National Awards Breakfast  
*Regency*
- 9:30 a.m. - 11:00 a.m. Plenary: Through the Lens of the Media  
*Nicollet Grand Ballroom*
- 11:00 a.m. - 12:45 p.m. Engaged Research Committee: Strategies for Publishing Engaged Research  
*Northstar A*
- 11:15 a.m. - 12:30 p.m. Presidential Panel  
*Mirage*
- 11:15 a.m. - 12:30 p.m. Concurrent Sessions  
*Various Locations*
- 12:45 p.m. - 2:15 p.m. Nesta M. Gallas Lecture  
*Nicollet Grand Ballroom*
- 2:30 p.m. – 3:45 p.m. Presidential Panel  
*Mirage*
- 4:00 p.m. - 5:15 p.m. Concurrent Sessions  
*Various Locations*
- 5:15 p.m. - 6:15 p.m. Chapter, Section and Journal Business Meetings  
*Various Locations*
- 6:00 p.m. - 7:45 p.m. Korean Association for Public Administration (KAPA) Reception  
*Regency*



We put the *good* in good  
governance.

CPAP

THE CENTER FOR PUBLIC  
ADMINISTRATION and POLICY



## Conference at a **Glance**

6:00 p.m. - 7:45 p.m. Section on Hispanic, Latin American, Caribbean and Iberian Public Administration (SHLACIPA)  
Launch Party  
*Lakeshore A*

6:00 p.m. - 7:45 p.m. Section on Professional and Organizational Development (SPOD)  
Reception  
*Skyway A-B*

6:30 p.m. - 7:45 p.m. Founders' Fellows Reception  
*Minnehaha*

### Tuesday, April 16

7:00 a.m. - 10:00 a.m. ASPA Registration Open  
*Nicollet Promenade*

7:00 a.m. - 10:00 a.m. ASPA Lactation Room Open  
*Obtain Access from ASPA Registration*

7:30 a.m. - 8:45 a.m. Concurrent Sessions  
*Various Locations*

9:00 a.m. - 10:15 a.m. Concurrent Sessions  
*Various Locations*

10:30 a.m. - 11:45 a.m. Concurrent Sessions  
*Various Locations*

Noon - 1:00 p.m. Closing Plenary and Annual Membership Meeting  
*Nicollet Grand Ballroom*

# Welcome **Reception**

**SATURDAY, APRIL 13**

**6:30 p.m. – 8:30 p.m.**

*Lobby and Northstar A*

We are so excited to welcome you to ASPA's 2024 Annual Conference! Join us for this fun—and free!—Welcome Reception celebrating Minnesota heritage! You'll have the opportunity to enjoy state foods and local favorites, have fun with our photo booths and mingle with friends and colleagues.

There also will be a Paint-and-Sip opportunity! Join a local artist as he instructs you through painting a local landscape, all while drinking your favorite beverage. You can chat with those around you or ignore everything and focus on the painting.

We are looking forward to seeing everyone for this wonderful event!

## *Sponsors*

Florida International University, Steven J. Green School of  
International and Public Affairs

University of New Mexico, School of Public Administration

# Networking **Receptions**

Join your conference friends and peers for a series of receptions hosted and generously supported by universities and other organizations. These networking events are open to all attendees unless otherwise noted.

## **FRIDAY, APRIL 12**

**5:00 p.m. – 7:00 p.m.**

**Section on International and Comparative Administration  
50<sup>th</sup> Anniversary Reception**

*Lakeshore A*

**5:00 p.m. – 7:00 p.m.**

**Section on Personnel and Labor Relations Business  
Meeting and Reception**

*Greenway J*

**5:00 p.m. – 7:00 p.m.**

**Section on African Public Administration Business  
Meeting and Reception**

*St. Croix*

**6:30 p.m. – 7:45 p.m.**

**Section on Transportation Policy and Administration  
Reception**

*Greenway A*

**6:30 p.m. – 7:45 p.m.**

**Founders' Fellows Reception**

*Lakeshore B*

Sponsored By: University of Central Florida

## **SUNDAY, APRIL 14**

**6:00 p.m. – 7:00 p.m.**

**Pets and Preparedness Reception**

*Northstar A*

**6:30 p.m. – 8:15 p.m.**

**Florida State University Askew School Reception in Honor  
of Fran Berry's Retirement**

*Regency*

**6:30 p.m. – 8:15 p.m.**

**Section for Women in Public Administration (SWPA)**

**Ice Cream Social**

*Greenway A*

**6:30 p.m. – 8:15 p.m.**

**International Reception**

*Greenway J*

**6:30 p.m. – 8:15 p.m.**

**Career Fair**

*Skyway A&B*

**8:30 p.m. – 10:00 p.m.**

**President's Reception**

*Northwoods*

## **MONDAY, APRIL 15**

**6:00 p.m. – 7:45 p.m.**

**Section on Hispanic, Latin American, Caribbean and Iberian Public Administration (SHLACIPA) Launch Party**

*Lakeshore A*

**6:00 p.m. – 7:45 p.m.**

**Korean Association for Public Administration Reception**

*Regency*

**6:00 p.m. – 7:45 p.m.**

**Section on Professional and Organizational Development Reception**

*Skyway A-B*

**6:30 p.m. – 7:45 p.m.**

**Founders' Fellows Reception**

*Minnehaha*



## Founders' Fellows Class of 2024

Michelle Allgood .....	University of New Mexico
Karissa Bergene .....	George Mason University
Noelle Broughton .....	University of Kansas
Aaron Colletta .....	University of Nevada, Las Vegas
Claudia Cormier .....	Texas State University
Raúl Gutiérrez Meave.....	University of Illinois—Chicago
Kathryn Hickey .....	University of Central Florida
Colt Jensen.....	University of Georgia
Perrin Kennedy .....	American University
Sola Kim .....	Arizona State University
Georgia Noone-Sherrod .....	The University of Baltimore; Anne Arundel Conflict Resolution Center
Diane Odeh.....	Portland State University
Reyna Reyes Núñez .....	University of Nebraska at Omaha
Krzysztof Sadowski.....	Fairleigh Dickinson University; Passaic County Sheriff's Office
Xiaojiao Shi.....	Renmin University of China
Mariana Silveira.....	São Paulo School of Business Administration
John South .....	Florida International University
Mary Strawderman .....	Virginia Commonwealth University
Reidel Vichot.....	University of Delaware
Melanie Waddell .....	University of Georgia
Amerra Webster .....	University of Montana

# Opening Plenary and Elliot Richardson Lecture

April 13 | 9:00 a.m. – 10:30 a.m.

Nicollet Grand Ballroom



## Courtney Phillips

*President and CEO, PhillipsClark Consulting*

As president and CEO of PhillipsClark Consulting, Courtney Phillips assists clients with brainstorming innovative solutions, solving complex challenges and building government and community relationships.

Her intimate understanding of the government sector provides an advantage in assisting clients to navigate the challenges and constraints faced in the evolving health care sector.

Prior to this, Phillips was secretary of Louisiana's largest state agency, the Louisiana Department of Health (LDH), with a budget of \$19.1 billion and a 6,000-member team, responsible for delivering services to millions of Louisianans. LDH is the state's entity responsible for protecting and promoting health for Louisiana residents through services provided by Medicaid and the Offices of Public Health, Behavioral Health, Citizens with Developmental Disabilities, Aging and Adult Services and Emergency Preparedness. She served as head of LDH amid a global pandemic; the department received national recognition for its innovative response to the pandemic.

Phillips also has led state health and human services agencies in Nebraska and Texas. As CEO of the Nebraska Department of Health and Human Services, her work transformed the agency into a more accountable, transparent entity. As executive commissioner of the Texas Health and Human Services (HHS) System, she helped HHS deliver services more efficiently and effectively.

Phillips holds a bachelor's degree and MPA from Louisiana State University and a PhD in public policy from Southern University. She has earned an Executive Green Belt in Lean Six Sigma.



## **Jacob Frey**

*Mayor, City of Minneapolis*

Since his election in 2017—and re-election in 2021—Minneapolis Mayor Jacob Frey has championed an agenda centered on increasing access to affordable housing throughout the city, strengthening community-police relations and fueling economic growth through inclusive policies. In his first year alone, he successfully advocated for a record-setting \$40 million investment in the city's affordable housing efforts and signed into law a landmark comprehensive plan that pushes back on generations of intentional segregation. Over the past few years, his Stable Homes Stable Schools initiative—a collaborative public-private effort—has helped provide housing for more than 3,000 homeless Minneapolis public school students and their families. The mayor also has focused on instilling accountability in the Minneapolis Police Department and rebuilding police-community relations. Since June 2020, he has established more than two dozen police policy reforms, most recently prohibiting no-knock search warrants. He has set up the new Office of Community Safety to provide a comprehensive approach to safety and in March 2023, he finalized and signed a court-enforceable settlement agreement with the Minnesota Department of Human Rights to further reform the police department. Finally, he has made inclusive economic growth the center of his economic agenda and continued to work with small businesses to ensure they have the resources to compete.

# Donald C. Stone Lecture

April 14 | 8:00 a.m. – 9:30 a.m.

Nicollet Grand Ballroom



## Chester A. Newland

*Emeritus Duggan Distinguished Professor of Public Administration, University of Southern California*

Chet Newland is an ASPA past president (1981-1982) and former editor in chief of *Public Administration Review* (1984-1990). He has been active in ASPA since the mid-1950s—almost 70 years!—and has served as an ASPA Chapter president in North Texas, Central Virginia and Sacramento. He has been an active fellow of the National Academy of Public Administration (NAPA) since 1975 and was a recipient of NAPA's George Graham Award for Exceptional Service in 2012.

Newland was the initial director of the Lyndon Baines Johnson Presidential Library and served twice as director of the Federal Executive Institute. He served on faculties of the University of North Texas, George Mason University, the University of the Pacific McGeorge School of Law and, chiefly, the University of Southern California (USC), where he is emeritus Duggan distinguished professor of public administration.

Newland became active in the International City/County Management Association (ICMA) in 1955 and has been an honorary member since 1980. He served for more than a decade on ICMA's credentialing advisory board. Internationally, he has worked in Bahrain, Bangladesh, Greece, Hungary, Iraq, Kazakhstan, Mexico, South Korea, Taiwan and Poland.

Among his many honors, Newland has received ASPA's Dwight Waldo Award for lifetime practice, teaching and scholarship (2007); ASPA's Southern California Chapter's Earl Warren Award for Public Service (2011); USC's Lifetime Achievement Award (2014); and ASPA's Nesta M. Gallas Award (2019), also a lifetime achievement award.

# Public Service Plenary

April 14 | 12:45 p.m. – 2:15 p.m.

Nicollet Grand Ballroom



## Commissioner Toddrick Barnette

*Commissioner of Community Safety, City of Minneapolis*

Commissioner Toddrick Barnette was born and raised in southeast Washington, DC. He began his career in the Hennepin County, Minnesota's Public Defender's Office as a law clerk and then attorney, handling a variety of cases. From 2001-2004, he was the senior attorney supervisor in the Drug Court Unit. He went on to join the Hennepin County Attorney's Office as a senior assistant county attorney in the juvenile division.

Barnette was appointed to the Hennepin County Judicial District Court in 2006, where he served as the presiding judge of drug court for two years and presiding judge of the criminal division for two terms. He was elected assistant chief judge by his colleagues in 2016 and 2018 and then chief judge in 2020, after which he was reelected for a second term in 2022. He is the first Minnesota State Court chief judge of color.

On September 11, 2023, Minneapolis Mayor Jacob Frey nominated Barnette to be the city's Commissioner of Community Safety. He was confirmed by the city council shortly thereafter. This role entails leading the city's Office of Community Safety by managing and coordinating five departments and breaking down barriers among them.

Barnette is an adjunct faculty member at the University of St. Thomas Law School. He received his bachelor's degree from The George Washington University and his JD from the University of Minnesota Law School.

Sponsored By



TEXAS A&M UNIVERSITY  
The Bush School  
of Government & Public Service

# International Assembly

April 15 | 5:00 p.m. – 6:30 p.m.

Nicollet Grand Ballroom



## Pan Suk Kim

*Professor Emeritus, Yonsei University*

Pan Suk Kim was dean of the College of Government and Business and is professor of public administration in the College of Government and Business at Yonsei University, South Korea. He served as minister of personnel management of the Republic of Korea (2017-2018) and secretary to the president for personnel policy in the Office of the President of the Republic of Korea (2003-2005). He has served ASPA in various capacities including as a National Council member, chair of the Section on Professional and Organizational Development and board member of the Section on International and Comparative Administration. He has (co)authored several books and published more than 200 refereed articles.

He was deputy editor of the *International Review of Administrative Sciences*; editor in chief of the *Asian Review of Public Administration*; and editor in chief of the *International Review of Public Administration* and *Korean Policy Studies Review*. He serves on the editorial boards of major international journals and has received several ASPA awards including the International Public Administration Award, the Donald C. Stone Service to ASPA Award and the Section on International and Comparative Administration's Fred Riggs Award.

He received his doctoral degree from American University in Washington, DC and was on the faculties of Austin Peay State University in Tennessee and Old Dominion University in Virginia. He has been a Fulbright visiting scholar at Georgetown University, a visiting scholar in residence at American University and a visiting scholar at the George Washington University. He is an elected fellow of the National Academy of Public Administration.

# Plenary: Through the Lens of the Media

April 15 | 9:30 a.m. – 11:00 a.m.

Nicollet Grand Ballroom



## Jacqueline Alemany

*Congressional Investigations Reporter,  
The Washington Post*

Jacqueline Alemany is a congressional investigations reporter for *The Washington Post*. She joined *The Washington Post* in 2018 after six years at CBS News, where she covered the Trump White House. She was a member of the team that received the Pulitzer Prize in public service for coverage of the Jan. 6, 2021, attack on the U.S. Capitol. She also is an on-air contributor to NBC News and MSNBC. She studied government at Harvard College where she was the captain of the women's basketball team.

*Alemany will be in conversation with ASPA Executive Director and CEO Bill Shields.*

# Nesta M. Gallas Lecture

April 15 | 12:45 p.m. – 2:15 p.m.

Nicollet Grand Ballroom



## Marc Holzer

*Distinguished Research Professor, Suffolk University*

The founding dean of the School of Public Affairs and Administration at Rutgers University and now distinguished research professor at Suffolk University, Holzer is a prominent international leader in public administration and has been recognized by many international public management leadership organizations. He is an ASPA past president and founder of the Northeast Conference on Public Administration, as well as ASPA's Sections on Korea, China and Humanities/Arts. He is a fellow of the National Academy of Public Administration and the World Academy of Productivity Science, and has been recognized with more than 20 national and international awards for his contributions in the field of research, teaching and service.

Supported by Nesta early in his career, Holzer worked with others to create this award in her honor. He has spent his career advancing ASPA's core values, as well as transforming public administration into an inclusive field through his research and scholarship and mentorship to those entering the field. Additionally, his more than 50 years of leadership have examined the challenges of enlightened public administration in search of human dignity and reason, including diversity, to sustain constitutional democracy.

Sponsored By





# Closing Plenary and Annual Membership Meeting

April 16 | Noon – 1:00 p.m.

Nicollet Grand Ballroom



## **Patria de Lancer Julnes**

*ASPA President (2023-2025) and Rosenthal Endowed Professor and Director, School of Public Administration, University of New Mexico*

Patria de Lancer Julnes is the inaugural Rosenthal endowed professor of public administration and director of the School of Public Administration at the University of New Mexico. She is an internationally recognized scholar and consultant in performance measurement, government capacity building and citizen-driven governance. She received her PhD in public administration from Rutgers University. She is a fellow of the National Academy of Public Administration.

*This session includes the official transition of National Council leadership and oath of office.*

## **Recognition Presentations**

### **Outgoing National Council Members**

**George Amedee**  
*COMPA Representative*

**Jennifer Martinez-Medina**  
*Student Representative*

**Maria D'Agostino**  
*District I Representative*

**Miriam Singer**  
*District III Representative*

**Ana-Maria Dimand**  
*District IV Representative*

**Aziza Zemrani**  
*District V Representative*

**Diane Disney**  
*District II Representative*



## Introducing UIC's Department of Public Policy, Management, and Analytics ONLINE MPA PROGRAM

Our research and degree programs provide communities with the skills and knowledge needed to effectively confront the problems that challenge the civic, fiscal, and economic sustainability of our neighborhoods, cities, and regions. Our alumni lead the organizations and policy networks critical to the quality of life in our urban communities.

### Online and Onsite Degree Programs:

Master of Public Administration – onsite, online, or accelerated – all accredited by NASPAA!

Master of Public Policy

Master of Science in Civic Analytics

JD Dual Degree Programs

PhD in Public Administration

BA in Public Policy

[onlinempa.uic.edu](https://onlinempa.uic.edu)

[cuppa.uic.edu/academics/pa/](https://cuppa.uic.edu/academics/pa/)

### Highly Ranked by USNWR in:

• Urban Policy #6

• Public Finance and Budgeting #10

• Local Government Management #10

• Nonprofit Management #20

• Public Policy Analysis #32

• Public Management and Leadership #35



UNIVERSITY OF  
ILLINOIS CHICAGO

Department of Public Policy,  
Management, and Analytics

# WE ARE GOLDEN

**WEST CHESTER UNIVERSITY**

**PUBLIC ADMINISTRATION  
FLEXIBLE, AFFORDABLE,  
100% ONLINE OPTIONS  
AVAILABLE**

**DOCTORAL • MASTER'S • CERTIFICATES**

**GRE  
NOT  
REQUIRED**



**LEARN MORE AT [WCUPA.EDU/PPA](http://WCUPA.EDU/PPA)**



**WCU**  
**WEST CHESTER**  
**UNIVERSITY**

DPA Program Director: Dr. Kristen Crossney, [dpa@wcupa.edu](mailto:dpa@wcupa.edu)  
MPA Program Director: Dr. Angela Kline, [mpa@wcupa.edu](mailto:mpa@wcupa.edu)

# Presidential Panels

All sessions take place in Mirage

**FRIDAY, APRIL 12**

**3:30 p.m. – 4:45 p.m.**

## **Attracting and Preparing the Next Generation of Public Servants and Leaders**

The public service pipeline is struggling but there are ways to combat this problem. The Volcker Alliance's Next Generation Services Initiative is working with universities and young people across the country to mentor and grow our next generation of public servants. Our speakers will tell you more about the program, as well as its successes and challenges.

Sponsored By  SCHOOL OF PUBLIC ADMINISTRATION

### **Moderator**



#### **Patria de Lancer Julnes**

*Rosenthal Endowed Professor and Director, School of Public Administration, University of New Mexico; President, American Society for Public Administration*

Patria de Lancer Julnes is the inaugural Rosenthal endowed professor of public administration and director of the School of Public Administration at the University of New Mexico. She is an internationally recognized scholar and consultant in performance measurement, government capacity building and citizen-driven governance. She received her PhD in public administration from Rutgers University. She is a fellow of the National Academy of Public Administration.

## Presenters



### **Michelle Allgood**

*Assistant Professor, University of New Mexico*

Michelle Allgood is assistant professor in the University of New Mexico's School of Public Affairs. Her research focuses on public management, workplace coping and employee well-being, and equity and access issues, especially for members of the disability community. Her recent work has been published in *Information Polity*, *Review of Public Personnel Administration* and *Public Performance & Management Review*.



### **John Bartle**

*Dean, University of Nebraska at Omaha*

John Bartle is dean of the College of Public Affairs and Community Service, and professor of public administration at the University of Nebraska at Omaha. He is a fellow of the National Academy of Public Administration and serves as treasurer. He received two major awards from ASPA Sections: the Aaron Wildavsky Award for lifetime achievement in budgeting and financial management and the Truitt-Felbinger Award for significant contributions to the field of transportation policy and administration. In addition to his published works, he has worked with the Nebraska legislature to provide policy advice for more than 10 years. His bachelor's degree is from Swarthmore College, his MPA is from the University of Texas, his PhD is from The Ohio State University and he has an honorary Doctorate of Humane Letters by the State University of New York in 2016.



**Roger Hartley**  
*Dean, University of Baltimore*

Roger Hartley is in his ninth year as dean of the College of Public Affairs at the University of Baltimore. He is a first-generation college graduate who received his BS from Indiana University and MA and PhD from University of Georgia. Professionally he has served as chair and member of NASPAA's Commission on Peer Review and Accreditation, co-chair of its comprehensive schools section and member of its executive committee. He serves on Baltimore's Charter Review Commission, with several Volcker Alliance initiatives and on ASPA's development committee. He co-leads his university's taskforce to advance university engagement.



**Brett Hunt**  
*Senior Director, Next Generation Services Initiatives, Volcker Alliance*

Brett Hunt is senior director of the Next Generation Service Initiatives at the Volcker Alliance. In this role, he oversees the Alliance's Next Generation Service Corps initiative, working directly with a network of 18 universities around the country to create innovative programs that prepare college students for careers in public service. Previously, he founded the nation's first Public Service Academy at Arizona State University. He began his career as a captain in the U.S. Army and Foreign Service officer at the U.S. Department of State. Hunt holds degrees from the University of Colorado at Boulder and the Thunderbird School of Global Management.

**SATURDAY, APRIL 13**

**11:00 a.m. – 12:15 p.m.**

**Need-Policy-Implementation: Purpose and Progress through Intergovernmental Partnerships**

Facing multi-jurisdictional challenges with complex resource management and under-evolving political and social environments is the heart of public service—that's why we love what we do! This session illustrates experiences from county leaders as they collaborate with federal and state administrations and local jurisdictions. Two case studies are presented to foster discussion and insights: California State Association of Counties' AT HOME initiative to address unhoused populations and Minnesota's approach to the opioid settlement. Multiple themes will be explored through systems lenses, including contemporary governance practices, role clarity and intergovernmental partnerships.

**Presenters**



**Paul Danczyk**

*Chief Operating Officer, California Counties Foundation*

Paul Danczyk is chief operating officer for the California Counties Foundation, where he leads major initiatives supporting California counties and leadership.

This includes the California State Association of Counties (CSAC) Institute, CSAC Grants Initiative, California Emerging Technology Fund Partnership and executive services. Formerly, he was director of executive education (Sacramento) for the University of Southern California's (USC) Sol Price School of Public Policy. He is an ASPA past president (2019-2020). A returned Peace Corps volunteer, he earned his PhD from the University of Pittsburgh, his MPA from USC and his BS from Penn State. He is a professional certified coach from the International Coaching Federation and holds certifications including Harvard's Mediating Disputes.



### **Graham Knaus**

*Chief Executive Officer, California State Association of Counties*

Graham Knaus serves as chief executive officer for the California State Association of Counties (CSAC) and California Counties Foundation, representing California's 58 counties and their 296 elected supervisors. In addition to CEO roles, he is vice president of the CSAC Finance Corporation Board and the National Council of County Association Executives. He sits on the Smart Easy Pay Board and the California Foundation on the Environment and the Economy, as well as multiple nonprofit boards. Knaus received his BA in political science/public policy from University of California San Diego and his MPA from University of Southern California.



### **Julie Ring**

*Executive Director, Association of Minnesota Counties*

Julie Ring has dedicated her career to public service, with 30 years of experience in program management, public policy, advocacy and executive leadership.

Appointed executive director of the Association of Minnesota Counties in 2013, she previously served as a policy analyst and lobbyist for the organization. She also has worked in Minnesota state government and county government in rural South Dakota. She has a BA from the University of Minnesota—Morris and a certificate in conflict resolution from the Mitchell Hamline School of Law.



**2:00 p.m. – 3:15 p.m.**

## **Racial Equity in Minnesota's Local Government: Insights from the *Racial Equity Dividends Index***

The Center for Economic Inclusion (CEI) is a Minnesota-based nonprofit “committed to closing racial employment, income and wealth gaps and building racially inclusive and equitable regional economies that work for everyone.” In 2023, CEI released its first *Racial Equity Dividends Index Report for the Public Sector (REDI)*. Twenty-two local governments and public agencies in Minnesota participated in the study, which evaluates the governments’ progress on 70 racial equity standards. This panel will include a review of the REDI results, as well as insights from participating units of government. It will allow you to see how one organization is working to measure and enhance racial equity in local government and how local governments in Minnesota are doing in the work to advance racial equity and economic inclusion.

### **Moderator**



#### **Heather Worthington**

*Managing Consultant, Racial Equity  
Dividends Index Report for the Public  
Sector*

Heather Worthington leads efforts to accelerate racial equity and regional inclusive economic growth through the development and implementation of systems-change initiatives with local, regional and state government agencies. As director of long range planning in Minneapolis, her team led the creation, engagement and policy adoption of the Minneapolis 2040 Comprehensive Plan. She also served as interim community development director in Bloomington, Minnesota. She has served as deputy county manager in Ramsey County, city administrator of Falcon Heights, Minnesota and assistant city manager of Edina, Minnesota. She is committed to seeking authentic community engagement and leading racial equity efforts to strengthen communities that have experienced disparities, disinvestment, displacement and marginalization.

## Presenters



### **Nathan Arnosti**

*Director of Analytics, Center for Economic Inclusion*

Nathan Arnosti leads the Center's work to develop and offer proprietary consulting products and tools that analyze employee, resident and business data and leverage best practices in antiracism, policy research and systems change to inform public and private sector employer actions. He and the analytics team partners with consultants to provide comprehensive organizational analysis that enables the Center to guide business leaders, public sector employers and policymakers to take strategic actions to dismantle institutional racism and close racial employment, income and wealth gaps and improve their bottom-line results. Arnosti worked as a policy analyst at the Brookings Institution and served as a consultant to the McKnight Foundation and in state and local government in New York. He holds a Master in City Planning from the Massachusetts Institute of Technology and a bachelor's degree from Middlebury College.



### **Prince Corbett**

*Director of Racial Equity, Inclusion and Belonging, City of Minneapolis*

Prince Corbett is a racial and social justice professional working to deconstruct and dismantle systems and policies that have created racial inequities. He is determined to end the income and wealth gap for Black residents in the Twin Cities. In his current role, he reviews government systems and structures to deconstruct them to create more equitable outcomes. During the COVID-19 pandemic, he led the Ramsey County Racial Equity and Community Engagement Response Team (RECERT) to address racial inequities by informing the county's response to policy, system and operational changes. He initiated the Community Advisory Committee, known as the Equity Action Circle (EAC), to develop strategies and solutions,

in partnership with countywide leadership and RECERT, to incorporate community-identified priority focus areas to meet the needs of racial and ethnically diverse residents.



**Faith Jackson**

*Chief Equity and Inclusion Officer, City of Bloomington*

Faith Jackson was hired as the city's first-ever racial equity coordinator in 2019, shortly before the city adopted its Racial Equity Business Plan (REBP) in 2020. The business plan charts the path for an expansion of the city's racial equity work in the years to come. Before coming to Bloomington, she worked as assistant admissions director for Mitchell Hamline School of Law. Prior to that, she was a policy aide with the City of Minneapolis Department of Civil Rights. Among many things, Jackson is particularly proud of her efforts to organize statewide research and study on resources needed by minority-owned businesses, producing reports on sex offender concentration in north Minneapolis, and cultivating the Minneapolis Black Employee Network.



**Pat Trudgeon**

*City Manager, City of Roseville*

Pat Trudgeon has worked for the City of Roseville, Minnesota since October 2007 when he was hired as the community development director. In February 2014, he was named Roseville City Manager. Prior to working in Roseville, he served as the community development director for Ramsey, Minnesota. He also has worked as planning and development director of North Branch, Minnesota, city councilmember in Beloit, Wisconsin and a lobbyist in Wisconsin. He holds a bachelor's degree and a master's degree in urban and regional planning from the University of Wisconsin, Madison.

5:00 p.m. – 6:15 p.m.

## The *Chevron* Deference Case: What It Means for the Future of Evidence-Based Decisionmaking

By agreeing to hear two cases this year about a seemingly trivial issue of fees on herring fishermen, the Supreme Court is considering overturning a long-standing legal precedent known as *Chevron* Deference—which refers to an almost 40-year doctrine of judicial deference given to governmental administrative actions. Decided by a unanimous court in 1984, the *Chevron* case established an approach for courts to follow when interpreting federal agencies' interpretations of statutory provisions. It maintained that courts are obligated to defer to agencies that create administrative rules when statutes are ambiguous or silent, because they have the expertise, data and understanding to make appropriate decisions effectively, as long as they are reasonable, without judicial intervention. This recent Supreme Court case, which was heard in January with a decision expected in June, has raised concerns that courts can supplant administrative actions based on scientific expertise and data with their own opinions. Others argue that this is not a matter of concern. This panel will explore the issues involved in this critical case, including experts to represent both sides of the legal issues and speakers who can put the matter into perspective.

Sponsored By **PACE**  
UNIVERSITY

### Moderator and Presenter



**Katherine Barrett and Richard Greene**  
*Principals, Barrett and Greene, Inc.*

Katherine Barrett and Richard Greene have long done much-praised analysis, research and writing about state and local governments. They produce a widely acclaimed website “dedicated to state and local government,” at [greenebarrett.com](http://greenebarrett.com). Their latest book, *The Little Guide to Writing for Impact*, written in collaboration with Don Kettl, was published recently. They are currently engaged as: executive advisors to the American

Society for Public Administration; senior advisers, columnists and chairs of the advisory board for *Route Fifty*; special project consultants at the Volcker Alliance; senior advisors at the Government Finance Research Center at the University of Illinois in Chicago; fellows at the National Academy of Public Administration; visiting fellows at the IBM Center for the Business of Government; columnists and advisers for the Government Finance Officers Association; advisers to the National Association of State Personnel Executives; and editors of the commentary section for the *International Journal of Public Administration*. Though they work on virtually all projects as a team, the one exception is that Greene serves as chair of ASPA's Center for Accountability and Performance.

## Presenters



### **Justice Daniel Kelly**

*Former Justice, State of Wisconsin Supreme Court*

Daniel Kelly is senior fellow in constitutional governance at the Institute for Reforming Government. He was appointed by Gov. Scott Walker to the Wisconsin Supreme Court in 2016 to fill the vacancy created when Justice David T. Prosser, Jr. retired. He served in that capacity until August 2020.



### **Sanjay Narayan**

*Managing Attorney, Sierra Club*

Sanjay Narayan is managing attorney for the Sierra Club's environmental law program. Before joining the Sierra Club in 2002, he worked for the Northern Rockies office of Earthjustice in Bozeman, Montana, and for Farella Braun Martel LLP in San Francisco.



## **Robert Shea**

*Chief Executive Officer and Founder,  
GovNavigators*

Robert Shea is chief executive officer and founder of GovNavigators, a consultancy offering organizations strategic planning, public policy analysis and advocacy, and marketing and communications support. He has more than 25 years of experience working to improve government performance. He was a national managing principal at Grant Thornton and was appointed to the U.S. Commission for Evidence-Based Policymaking, which developed a strategy for increasing availability and use of data to make evidence-based decisions in government. He served for six years as associate director for the U.S. Office of Management and Budget leading an initiative to measure government programs using its program assessment rating tool. He served as senior management counsel for the Senate Committee on Governmental Affairs and as legislative director for Congressman Pete Sessions. He has a JD from South Texas College of Law and a BA from Connecticut College.

## **SUNDAY, APRIL 14**

**10:15 a.m. – 11:30 a.m.**

### **Community Resilience During Climate Change**

Climate change, and the resulting impacts on people and infrastructure, is increasingly affecting cities, towns and localities around the country and world, each with its own perspectives and needs. That means communities and administrators need site-specific actionable data to help them make their own decisions and choices about how to respond to this growing challenge. Our presenters will share with you their experiences about what is happening, what information is—and isn't—available and how to make decisions in the face of incomplete knowledge. They will also answer your questions and discuss with you what more can and should be done.

## Convener



### **Louise Comfort**

*Professor Emerita and Former Director,  
Center for Disaster Management, GSPIA,  
University of Pittsburgh*

Louise Comfort is professor emerita and former director of the Center for Disaster Management at the Graduate School of Public and International Affairs, University of Pittsburgh. She is a visiting researcher at the Center for Information Technology Research in the Interest of Society at the University of California, Berkeley. She also is a fellow of the National Academy of Public Administration and received ASPA's Section on International and Comparative Administration's 2020 Fred Riggs Award for Lifetime Achievement. Her recent books include *The Dynamics of Risk: Changing Technologies and Collective Action in Seismic Events*, *Global Risk Management: The Role of Collective Cognition in Response to COVID-19* and *Hazardous Seas: A Sociotechnical Framework for Early Tsunami Detection and Warning*. She studies the dynamics of decisionmaking in response to urgent events: earthquakes, tsunamis, hurricanes, wildfires and COVID-19.

## **MONDAY, APRIL 15**

**8:00 a.m. – 9:15 a.m.**

### **Redefining Comparative Public Administration in an Era of Global Transformation**

This session emphasizes the need for comparative public administration to adapt and redefine itself in the face of global transformations, crises and the increasing importance of interdisciplinary perspectives. The panel will explore how the field can challenge long-held assumptions, navigate complex challenges and incorporate insights from diverse disciplines to better understand and address the evolving landscape of public administration in a global context.

## Presenters



### **Jeanne-Marie Col**

*Associate Professor, John Jay College of Criminal Justice, City University of New York*

Jeanne-Marie Col is associate professor of public administration at John Jay College of Criminal Justice, City University of New York. She served as United Nations Senior Interregional Adviser in Governance and Public Administration from 1990-2003. She researches, teaches and consults in organization development, program evaluation, re-establishing governance in post-conflict countries and civil service reform. She has served on ASPA's National Council and chaired the Section on International and Comparative Administration, the Section for Women in Public Administration, the Section on Emergency and Crisis Management, the National Strategic Initiative Group for Chapters and Sections and was president of the New York Metro Chapter.



### **Naim Kapucu**

*Pegasus Professor of Public Administration and Policy, University of Central Florida*

Naim Kapucu is Pegasus Professor of public administration and policy and former director of the School of Public Administration at the University of Central Florida (UCF), and is joint faculty with the School of Politics, Security and International Affairs. He is an elected fellow of the National Academy of Public Administration. He received the Fulbright Distinguished Chair Award in Democratic Resilience jointly hosted by Flinders University and Carnegie Mellon University Australia. He received his PhD from the Graduate School of Public and International Affairs, University of Pittsburgh. He serves as associate dean of research and innovation at the College of Community Innovation and Education at UCF.





### **Kimberly Moloney**

*Faculty, College of Public Policy, Hamad Bin Khalifa University*

Kim Moloney is faculty at the College of Public Policy, Hamad Bin Khalifa University, Doha, Qatar. Her research focuses on the intersection of public administration with international organizations and transnational administration. This includes her most recent book, *Who Matters at the World Bank*. In addition, she has research agendas on the administrative challenges of small states, the intellectual history of public administration and, separately, on social equity. She was chair of ASPA's Section on International and Comparative Administration (SICA) from 2019-2021. Her PhD is in public administration from American University. Her MPA is from the Maxwell School at Syracuse University.



### **Meghna Sabharwal**

*Professor, University of Texas at Dallas*

Meghna Sabharwal is professor in the public and nonprofit management program at the University of Texas at Dallas (UTD) and an elected fellow in the National Academy of Public Administration. She also serves as associate provost of faculty success at UTD. With an extensive research portfolio, her focus lies in public human resources management, particularly addressing issues such as workforce diversity, equity and inclusion, high-skilled immigration, and comparative public human resources. Throughout her career, she has garnered recognition through numerous awards. She has authored five books and more than 70 peer-reviewed journal articles and book chapters, earning six best paper awards. She is editor-in-chief of the *Review of Public Personnel Administration*.



### **Krishna Tummala**

*Emeritus Professor of Political Science,  
Kansas State University*

Krishna Tummala is emeritus professor of political science at Kansas State University. He has published extensively in his research areas, including two edited volumes:

*Politics of Preference: India, the United States and South Africa* (2015) and *Corruption in the Public Sector: An International Perspective* (2021). He has served on the editorial board of *Public Administration Review*, on ASPA's National Council and NASPAA's Executive Council. He is the recipient of the Paul H. Appleby Distinguished Service to IIPA and Public Administration (2011); SICA's Fred Riggs Award for lifetime scholarly achievement in comparative and international administration (2005); and ASPA's Donald C. Stone Award for Outstanding Service to ASPA (2005).

**11:15 a.m. – 12:30 p.m.**

### **Public Administration in Latin America**

This session will address the history of public administration in Latin America, the measurement of good governance to include tools available and progress needed and the impact of monetary and financial reform in a closed system. The session will close with an overview on the current status of democracy and public administration in Latin America.

**Sponsored By**  SCHOOL OF PUBLIC ADMINISTRATION

### **Presenters**



### **Maria Aristigueta**

*Charles P. Messick Chair of Public  
Administration, University of Delaware*

Maria P. Aristigueta is Charles P. Messick Chair of public administration at the Joseph R. Biden, Jr. School of Public Policy at the University of Delaware, where she served as the founding dean. Her teaching and research interests are

primarily in the areas of public sector management, including performance management and organizational behavior. She is a fellow of the National Academy of Public Administration, an ASPA past president and a past member of the executive council of Network of Schools of Public Policy, Affairs, and Administration (NASPAA). Her doctorate is from the University of Southern California.



**Patria de Lancer Julnes**

*Rosenthal Endowed Professor and Director, School of Public Administration, University of New Mexico; President, American Society for Public Administration*

Patria de Lancer Julnes is the inaugural Rosenthal endowed professor of public administration and director of the School of Public Administration at the University of New Mexico. She is an internationally recognized scholar and consultant in performance measurement, government capacity building and citizen-driven governance. She received her PhD in public administration from Rutgers University. She is a fellow of the National Academy of Public Administration.



**Monica Mesa-Alvarez**

*Research Assistant, University of Delaware*

Monica Mesa-Alvarez is a PhD candidate in public policy and administration at the Biden School at the University of Delaware and research associate with the National Leadership Consortium on Developmental Disabilities. Her research follows the transformative paradigm grounded in the critical disability theory and organizational theories. Her dissertation research focuses on how organizations providing services for people with disabilities implement evidence-based practices framed on the human rights of people with disabilities. She is a mixed-methods researcher interested in using big data to inform policy

development, implementation and evaluation from the lenses of the critical paradigm and participatory research.



### **Edgar Ramirez de La Cruz**

*Professor, University of Nevada—Las Vegas*

Edgar Ramírez de La Cruz is professor in the School of Public Policy and Leadership at the University of Nevada—Las Vegas. He served as director of the public administration division of CIDE in Mexico. His most recent book on using evidence for decisionmaking in education policy was published in 2002. He has worked with public, nonprofit and private organizations in Mexico and the United States to create solutions for public problems. Ramírez was awarded ASPA's 2019 International Public Administration Award.

**2:30 p.m. – 3:45 p.m.**

### **Engaged Research in Public Administration**

This panel will feature cases of engaged research in public administration. Speakers will be invited to share their approach to engagement, noting ways that they included engaged research methods at various points in the research process, such as in shaping of research questions, gathering data and information, analyzing and interpreting findings and determining recommendations and sharing outcomes. They also will share about ways they remain connected with practitioners, communities and others outside of academia on an ongoing basis. Brief presentations and discussion among panelists will highlight the wide-ranging approaches to engaged research and what it means to be an engaged researcher in our field.

**Sponsored By**  **University of Pittsburgh**  
Graduate School of Public and International Affairs

## Moderators



### **Carissa Slotterback**

*Dean, Graduate School of Public and International Affairs, University of Pittsburgh*

Carissa Slotterback is dean of the University of Pittsburgh's Graduate School of Public and International Affairs.

Her scholarship is focused on public engagement and decisionmaking in environmental and land use policy and planning. She previously served as a faculty member, urban planning program director and associate dean in the University of Minnesota's Humphrey School of Public Affairs. She also led interdisciplinary and engaged research and education initiatives, including as director of research engagement in the Office of the Vice President for Research and as co-founder of the Resilient Communities Project. She currently co-chairs ASPA's Ad Hoc Committee on Engaged Research.



### **Diana-Camelia Iancu**

*Dean of Public Administration, National University of Political Studies and Public Administration, Romania*

Diana-Camelia Iancu is professor and dean at Public Administration College, National University of Political Studies and Public Administration (SNSPA Bucharest, Romania). She is senior fellow of the International Association of Universities and expert of the group on the European charter of local self-government at the Council of Europe. She has an active interest in educational policies and is a member of different quality assurance bodies and accreditation committees focused on public administration education and training. She co-chairs ASPA's Ad Hoc Committee on Engaged Research.

## Presenters



### **Brandi Blessett**

*Associate Professor, University of Minnesota*

Brandi Blessett is associate professor in the leadership and management area in the Hubert H. Humphrey School of Public Affairs at the University of Minnesota.

She has developed a reputation as a socially conscious researcher, administrator, teacher and community partner. Her personal ethic always has been to center the lived experience to offer more robust insights by those directly impacted by administrative decisions.



### **Tia Sherèe Gaynor**

*Associate Professor, University of Minnesota*

Tia Sherèe Gaynor is associate professor in leadership and management at the Hubert H. Humphrey School of Public Affairs at the University of Minnesota.

With more than 20 years of experience in higher education, her award-winning community-partnered research explores the intersection of social and public policy, local government and identity-based narratives. Her recent work focuses on liberatory management—a theoretical framework that uses contemplative and mindfulness practices as pathways for strengthening equitable decisionmaking in the public sector. She is co-founder of Praxis Matters, a consulting company working with organizations of all sizes to achieve their equity and inclusion goals and is a Certified Mindfulness Teacher through the International Mindfulness Teachers Association.



## **Jodi Sandfort**

*Dean, University of Washington*

Jodi Sandfort joined the Evans School of Public Policy and Governance as dean in 2021, where she oversees the operation of a \$13.8 million budget. She is focused on expanding pathways to public service and broadening the school's educational programs. Formerly a professor at the Humphrey School of Public Affairs, University of Minnesota, she founded and was academic director of the Hubert Project, a global community focused on improving public policy education through developing and sharing multimedia learning materials. She is an elected fellow of the National Academy of Public Administration and a nationally elected executive council member of the Network of Schools of Public Policy and Public Affairs. She serves on the editorial boards of *Asia Pacific Journal of Public Administration*, *American Review of Public Administration* and *Journal of Policy Analysis and Management*.

30<sup>TH</sup>  
ANNIVERSARY

Baruch COLLEGE

MARXE SCHOOL OF PUBLIC  
AND INTERNATIONAL AFFAIRS

[marxe.baruch.cuny.edu](http://marxe.baruch.cuny.edu)



ADVANCING

PUBLIC SERVICE

EDUCATION AT MARXE

Learn more about our professional degrees and advanced certificates!

- **Master of Public Administration** (MPA)
- **Online Master of Public Administration** (OMPA)
- **Executive MPA** (EMPA)
- **Master of International Affairs** (MIA)
- **Master of Science in Education in Higher Education Administration** (MSEd-HEA)
- **Certificate in Public Communication**
- **Certificate in Quantitative Methods for Policy and Equity Analysis**



## Special Events

**FRIDAY, APRIL 12**

**12:30 p.m. – 1:45 p.m.**

*Mirage*

### BookTalk Live!

ASPA is bringing one of its most popular programs to life! If you've ever enjoyed one of ASPA's *BookTalk* programs online, now is your chance to join us for a live event. More, you get double the bang for your buck as we will be interviewing authors of two new releases: *Writing for Impact: How to Communicate Research in a Way That People Will Read* by Katherine Barrett and Richard Greene, and *Managing Gender Inequity in Academia: A Guide for Faculty and Administrators in Public Affairs Programs* by Gina Scutelnicu Todoran. While these are very disparate topics, they also are very important to our discipline. Two of the field's most prominent media authors and researchers—Katherine Barrett and Richard Greene—will discuss how to communicate well in writing (a skill that can be hard to develop) and Gina Scutelnicu Todoran will explore her research related to gender inequality and how faculty can mitigate this pressing concern. We'll take questions from the audience and authors will provide details for how to get copies!

#### Moderator



#### **Bill Shields**

*Executive Director and CEO, American Society for Public Administration*

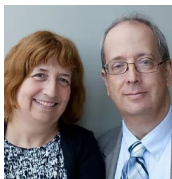
Bill Shields became executive director and CEO of ASPA in January 2014.

During his tenure, he has significantly broadened the Society's professional

development programming, strengthened its Chapters and Sections, revitalized its operations and enhanced the quality

of its communications. He has recommitted the Society to its core mission of advancing excellence in public service and made considerable inroads in partnering with like-minded organizations on a wide range of activities. Shields earned his MA in government and BA in journalism from American University. He is an elected fellow of the National Academy of Public Administration and a member of the governing board of NIGP: The Institute for Public Procurement.

## Presenters



**Katherine Barrett and Richard Greene**  
*Principals, Barrett and Greene, Inc.*

Katherine Barrett and Richard Greene have long done much-praised analysis, research and writing about state and local governments. They produce a widely acclaimed website “dedicated to state and local government,” at [greenebarrett.com](http://greenebarrett.com). Their latest book, *The Little Guide to Writing for Impact*, written in collaboration with Don Kettl, was published recently. They are currently engaged as: executive advisors to the American Society for Public Administration; senior advisers, columnists and chairs of the advisory board for *Route Fifty*; special project consultants at the Volcker Alliance; senior advisors at the Government Finance Research Center at the University of Illinois in Chicago; fellows at the National Academy of Public Administration; visiting fellows at the IBM Center for the Business of Government; columnists and advisers for the Government Finance Officers Association; advisers to the National Association of State Personnel Executives; and editors of the commentary section for the *International Journal of Public Administration*. Though they work on virtually all projects as a team, the one exception is that Greene serves as chair of ASPA’s Center for Accountability and Performance.



**Gina Scutelnicu Todoran**  
*Professor, Pace University*

Gina Scutelnicu Todoran is professor of public administration at Pace University; associate editor for *Public Integrity* and *Public Administration Quarterly*; and chair of the Northeastern Conference of Public Administration. She has served on the executive boards of three ASPA Sections and the New York Metropolitan Chapter. Her research related to gender and social equity has appeared in highly regarded journals in the field. Her most recent book, *Managing Gender Inequity in Academia*, is published by Routledge, Taylor & Francis. She has a PhD in public affairs from Florida International University.

## Section on Ethics and Integrity in Governance 25<sup>th</sup> Anniversary Lunch

**SATURDAY, APRIL 13**

**Noon – 2:00 p.m.**

*Northstar A*



**Mylon Winn**  
*Special Assistant to the Dean for Public Administration and Professor, Criminology and Justice Studies; California State University Northridge*

Mylon Winn is a U.S. Air Force veteran and was commissioner for the Network of Schools of Public Policy, Affairs, and Administration's (NASPAA) Peer Review and Accreditation (COPRA) body. He served on *Public Administration Review's* editorial board and was a founding faculty member of the Clinton School of Public Service at the University of Arkansas. He served as chair of the department of public administration and the interim dean of the Nelson Mandela School of Public Policy at Southern University and A&M College. While at Southern University, he revised the department of public administration's accreditation

application material, which COPRA approved. He served as a consultant with the Texas Southern University MPA program, which included editing the public administration program's successful application for program reaccreditation.

Winn served as chair of ASPA's Standards and Ethics Committee in 1994, which revised the society's Code of Ethics, and received the National Council's approval to create *Public Integrity*, as well as appoint the journal's interim editor.

In 2016, Winn joined the faculty at California State University Northridge in its College of Social and Behavioral Sciences and served as the director of its self-supported MPA program.

Winn serves as special assistant to the dean for public administration and professor of criminology and justice studies at California State University Northridge, as well as acting department chair for the department of Africana studies. He is a graduate of the University of Washington where he earned his BA, MA and PhD. He has published refereed articles and book chapters on public sector administrative ethics, Black politics and organizational theory.

## Gloria Hobson Nordin Social Equity Luncheon

**SUNDAY, APRIL 14**

**11:15 a.m. – 12:45 p.m.**

*Regency*



### **Seymour Mansfield**

Seymour Mansfield actively practiced law for 48 years, first in Illinois and then Minnesota. He also was licensed to practice before the U.S. Supreme Court and many federal district and appellate courts. He was a legal aid lawyer in Illinois and Minnesota, culminating in his tenure as the executive

director and chief counsel for Minnesota's largest program for civil legal aid to the poor and disadvantaged in Minneapolis

and 22 counties (1979-1981). He continued as an active private practitioner in three Minnesota law firms—Seymour J. Mansfield & Associates, Mansfield Tanick & Cohen and Foley & Mansfield—until his retirement in 2019.

At the start of his lifelong pursuit of social, economic and racial justice cases, beginning while still in law school, Mansfield had the honor of successfully representing Gloria Hobson Nordin (then Gloria Smith) in an apartment rental discrimination case, *Gloria Smith v. Sol D. Adler Realty Co.*, resulting in a 1970 precedent-setting decision in the 7th Circuit of Appeals under the recently resurrected post-Civil War Civil Rights Act. Although he went on to be a lead counsel in many other major class and impact litigation, winning Gloria's case was extraordinarily resonant, memorable and special given the wonderful friendship between him, his wife and Gloria.

Mansfield became a nationally recognized litigator of ground-breaking law reform, impact and class-action cases in consumer protection, federal housing law and employment law, which he will highlight in his presentation. He was recognized as 2009 honoree of The Fund for Legal Aid and Bar Association at its Law Day Testimonial Dinner for his lifetime achievements in supporting legal services and the pursuit of social, economic and racial justice for the disadvantaged.

Mansfield has served on numerous boards throughout his career, including the Hennepin County and Minnesota State Bar associations, Possis Medical, Inc. (NASDAQ), Lawyers Associated Worldwide, Fund for Legal Aid, Jewish Community Action, Interfaith Action of Greater St. Paul, Generation Atomic and Bet Shalom Congregation. He is a former chair and current director of the Albert and Anne Mansfield Foundation.

Mansfield was an honors graduate from DePaul University Law School, where he was editor-in-chief of *DePaul Law Review*.

# Section for Women in Public Administration (SWPA) National Awards Breakfast

**MONDAY, APRIL 15**

**8:00 a.m. – 9:30 a.m.**

*Regency*

*Sponsored By*



## **Cynthia Bauerly**

*Vice President of Strategic Initiatives,  
Women's Foundation of Minnesota*

Cynthia Bauerly has extensive experience in law, management and public policy, serving in key public sector leadership and management roles in Washington, DC and Minnesota. She also has worked and volunteered for national, state and local campaigns and recounts for more than 30 years.

Most recently, Bauerly served as commissioner of the Minnesota Department of Revenue (2015-2020). She led more than 1,400 employees as they helped Minnesotans access the economic opportunities of the tax code and collected more than \$23 billion annually to fund state services. Prior to that role, she served as deputy commissioner of workforce development at the Minnesota Department of Employment and Economic Development, where she led the department's work of providing economic security for transitioning workers and workforce training and readiness.

From 2008 to 2013, living and working in Washington, DC, Bauerly served as a commissioner of the United States Federal Election Commission and chair of the agency in 2011. She also served as legislative director for Senator Chuck Schumer, developing and implementing a broad policy agenda that included working with the Senate Rules, Judiciary and Finance Committees and the Joint Economic Committee of Congress.

She also has worked in private practice in both Minnesota and Washington, DC.

Bauerly earned her BA from Concordia College in Moorhead, her JD from Indiana University School of Law—Bloomington and her MPA from Indiana University's School of Environmental and Public Affairs.



**MASTER OF PUBLIC ADMINISTRATION**  
CALIFORNIA STATE UNIVERSITY LONG BEACH™



**MASTER  
OF PUBLIC  
ADMINISTRATION  
PROGRAM**



**DISTANCE  
LEARNING  
PROGRAM**

**YOU WILL LEARN**

Skills for management and leadership positions with public service organizations, including government agencies and community-based organizations.

**FEATURES**

- Mixture of in-person, online, and 8-week hybrid course offerings
- MPA options in Urban Affairs and Public Works available

**FEATURES**

- Cohort learning team
- Preselected courses in a sequential accelerated format
- Synchronous online sessions and asynchronous instruction



# Student and New Professional Summit

**FRIDAY, APRIL 12**

*Skyway A-B*

**8:00 a.m. – 8:30 a.m.**

## **Getting Started: Practice or Academia? The Choice Is Yours**

A “public service” career can mean many things and encompass many arenas—practice and academia, public and private sectors, nonprofit and even for-profit organizations. These definitions constantly evolve, especially as public service professionals transition from one arena to the next. What career path to take is a question we often answer throughout our professional lives, but no more so than at the beginning. What does public service mean to you and what professional area is most inspiring? Where are your skills best suited and what kind of work schedule can you expect? How do you know when it is time to change your job or role, and how do you go about embracing that transition? These all are questions to consider as you plan for life beyond your degree. Our opening speaker will tackle these issues and set the stage for the rest of the day.

**Presenter**

**Kitty Wooley**

*Founder, Senior Fellows and Friends*

**8:30 a.m. – 9:30 a.m.**

## **Walking the Path to Success: Stories from Ones Who Have Done It**

Just as the scope of public service careers is varied and evolving, the definition of being “successful” is personal and varied, as well. Before getting into the nitty gritty of professional development, hear from a panel of leaders, spanning both the academic and practitioner communities, who will share their own public service journeys, their paths toward “success,” and their plans to keep going in the future.

## Moderator

### **Kitty Wooley**

*Founder, Senior Fellows and Friends*

## Presenters

### **Tom Becker**

*Instructor, Des Moines Area Community College*

### **Rex Facer, II**

*President, Facer Management Consulting*

### **Meredith Newman**

*Professor, Florida International University*

### **Malcolm Oliver**

*Dean, John S. Watson School of Public Service, Thomas Edison State University*

**9:30 a.m. – 9:45 a.m.**

## **Networking Break**

**9:45 a.m. – 11:00 a.m.**

## **Marketing Yourself on the Page: Tips for Effective Resumes and CVs**

Whether you decide to pursue a practitioner- or academic-oriented career, developing a compelling resumé or CV is an essential step toward securing the job you want. Effective resumé and CVs introduce you to a potential employer, sell your qualifications and get you to the next step of the hiring process. Whether you are 22 or 52, your life experiences, job history, skills, publications and service could fill pages. But, which are the most important to highlight? This workshop will walk you through the critical elements of a resumé and CV, depending on where your future takes you, and key dos and don'ts. Bring a copy of your resume or CV and all your questions; you will need both to make the most of this session.

## Presenters

### **Bill Shields**

*Executive Director and CEO, American Society for Public Administration*

### **Agatha Caraballo**

*Director and Associate Teaching Professor, Florida International University*

**11:00 a.m. – Noon**

## **Finding and Securing the Job: What? Where? How?**

### **Breakout I: Landing the Tenure-Track Position**

There is a world of difference between being a doctoral candidate, entering the world of academia and landing a tenure track position. It is critical to get out of the student mindset and mentally push yourself into the professor role. While many of your responsibilities may feel similar or the same as they were before, it is important that you treat them differently. Two professors will share with you their lessons learned, tips for success as you begin your journey and what public affairs programs are looking for in their search for talent.

#### **Presenters**

##### **Hillary Knepper**

*Professor/Associate Provost for Student Success, Pace University*

##### **Stephanie Pink-Harper**

*Associate Professor, University of Alabama at Birmingham*

### **Breakout II: Working on the Front Lines: State and Local Government Employment**

Whether it is a BA, MA, MPP, MPA—or even a PhD—you've got the degree. Now, how do you get started in a public sector career? As is the case with getting any job, it is not as easy as it looks. Where do most state and local servants begin their careers and how do you get your foot in the door? Our panelists will talk about their career trajectories, how they have used their networks for success and lessons they have learned along the way.

#### **Presenters**

##### **Michael Jacobson**

*Deputy Director, King County Office of Performance, Strategy and Budget*

##### **Alex Trembley**

*Data Analytics Manager, Hennepin County*

**Noon – 12:30 p.m.**

## **Lunch on Your Own**

**12:30 p.m. – 1:45 p.m.**

### **Book Talk Live!**

ASPA is bringing one of its most popular programs to life! If you've ever enjoyed one of ASPA's *Book Talk* programs online, now is your chance to join us for a live event. More, you get double the bang for your buck as we will be interviewing authors of two new releases: *Writing for Impact: How to Communicate Research in a Way That People Will Read* by Katherine Barrett and Richard Greene, and *Managing Gender Inequity in Academia: A Guide for Faculty and Administrators in Public Affairs Programs* by Gina Scutelnicu Todoran. While these are very disparate topics, they also are very important to our discipline. Two of the field's most prominent media authors and researchers—Katherine Barrett and Richard Greene—will discuss how to communicate well in writing (a skill that can be hard to develop) and Gina Scutelnicu Todoran will explore her research related to gender inequality and how faculty can mitigate this pressing concern. We'll take questions from the audience and authors will provide details for how to get copies!

### **Moderator**

#### **Bill Shields**

*Executive Director and CEO, American Society for Public Administration*

### **Presenters**

#### **Katherine Barrett**

*Principal, Barrett & Greene, Inc.*

#### **Richard Greene**

*Principal, Barrett & Greene, Inc.*

#### **Gina Scutelnicu Todoran**

*Professor, Pace University*

**1:45 p.m. – 2:00 p.m.**

### **Networking Break**

**2:00 p.m. – 3:00 p.m.**

### **Mastering the Art of the Job Interview**

Congratulations! You have scored the interview. How do you prepare? How do you make sure it goes well? And, what

exactly do you say when the interviewer asks things like “what is your biggest strength and weakness?” or “what questions do you have for me?” This session will provide you with key tips, musts and nevers to ensure you make a solid impression, hopefully get a call back and, even better, get the job. Bring your questions—better to ask now than to make a mistake later.

### **Presenters**

#### **J. Paul Blake**

*Consultant*

#### **Kendra Stewart**

*Director, Riley Center for Livable Communities and Professor,  
College of Charleston*

**3:00 p.m. – 3:45 p.m.**

### **Making Networking Work for You**

Need we say more? To be truly effective at networking, you must integrate it into your daily life. Yes, happy hours are helpful and you should always have business cards in your pocket. But, those practices are just two pieces of a larger puzzle. So are staying connected with former colleagues and friends; checking in with acquaintances to keep your name on their radar; building relationships with new contacts; knowing when and how to approach people; and making plans for social gatherings, whether you “need” anything or not. Networking, done best, is a daily habit and yields important, regular returns. Learn how to do it well during this session.

### **Presenters**

#### **Marlon Brown**

*Director, Michigan Department of Licensing and Regulatory  
Affairs*

#### **Nicki Fraser**

*Assistant Teaching Professor and Assistant Chair, Florida  
International University*

**3:45 p.m. – 4:00 p.m.**

### **Celebrating Success: 2024 Student Award Winners**

As we wrap up the day with some final reflections, we will take some time to introduce and celebrate this year's recipients of ASPA's student- and new professional-based awards.

#### **Presenter**

**Lindsey Evans**

*Assistant Professor, Virginia Commonwealth University, L.  
Douglas Wilder School of Public Affairs*

*Congratulations*



## **Marc Holzer, PhD**

Distinguished Research Professor (Ret.)  
*Institute for Public Service, Suffolk University*

Founding Dean & Professor Emeritus  
*School of Public Affairs and Administration, Rutgers University–Newark*

---

*2024 recipient of the*  
**Nesta M. Gallas Award**

---

*From*

**RaJade M. Berry-James • Tony Carrizales • Patria de Lancer Julnes  
Maria D'Agostino • Gigi Harris • Jonathan Justice • Younhee Kim  
Helisse Levine • Aroon Manoharan • Jim Melitski • Phil Nufrio • Kaifeng Yang**  
*and the countless doctoral students you have mentored over the years*

## Our 2024 Faculty



David Agrawal



Catherine Annis



JS Butler



Cory Curl



Rajeev Darolia



Chuanyi Guo



Taha Hameduddin



Hope Harvey



Bill Hoyt



Jeongyoon Lee



Annelise Russell



Luliia Shybalkina



Rhonda Trautman



Caroline Weber



Ron Zimmer

**42**  
—  
JOURNAL  
PUBLICATIONS  
2023-2024



Martin School of Public  
Policy and Administration





**WHAT IMPACT WILL YOU MAKE?**



**COLLEGE OF SOCIAL SCIENCES**

University of Hawai'i at Mānoa™

**PUBLIC ADMINISTRATION**

**Building Public  
Service Leadership  
in Hawai'i**

Check us out!



[puba.hawaii.edu](http://puba.hawaii.edu) | (808) 956-8260



RUTGERS-NEWARK

School of Public Affairs  
and Administration



*Congratulations*

**Suzanne Piotrowski**

*Professor, Rutgers SPAA*

**2024 Best Book Award**

ASPA's Section on Public  
Administration Research

*U.S. News & World Report*

2023-2024 Best Graduate Schools Rankings

**#4** in Urban Policy

**#12** in Public Management and Leadership

**#14** in Public Finance and Budgeting

**#15** in Nonprofit Management

**#21** in Local Government Management

**#28** in Best Public Affairs Programs

**Rutgers SPAA**

[spaa.newark.rutgers.edu](http://spaa.newark.rutgers.edu)